



WARNING

Read and understand all instructions prior to installing or using this product. The following are general safety warnings intended to bring attention to proper installation and areas of the product where proper usage must be followed. Failure to follow instructions could lead to product damage, product failure and/or serious injury, or death.

DO NOT machine wash or dry clean the product. Exposure to detergents, bleach, or solvents may result in expedited degradation and compromise the product.

Inspect the product for discoloration, cuts, tears, abrasions or cracks before and after each use.

DO NOT expose the product to open flame or excessive heat.

DO NOT alter the product in any way.

OPERATOR'S MANUAL

LV/119 SYSTEM

V 1.01

The LV/119 SYSTEM is a group of products that work together to give end users a scalable plate carrier solution that meets a wide range of operational requirements. All the individual components are compatible with each other and can be combined by the wearer. This operator guide will orient you on the basics of plate bag features and cummerbund sizing.

CONTENTS

02	LOW-PROFILE SHOULDER COVERS
03	TRI-FOLD SHOULDER COVERS
04	BUCKLES & TUBES
05	CUMMERBUNDS
09	MICRO FIGHT, PLACARD & POUCHES
10	INSTALLING PLATES

DESIGNED, TESTED, AND MANUFACTURED IN **THE USA**

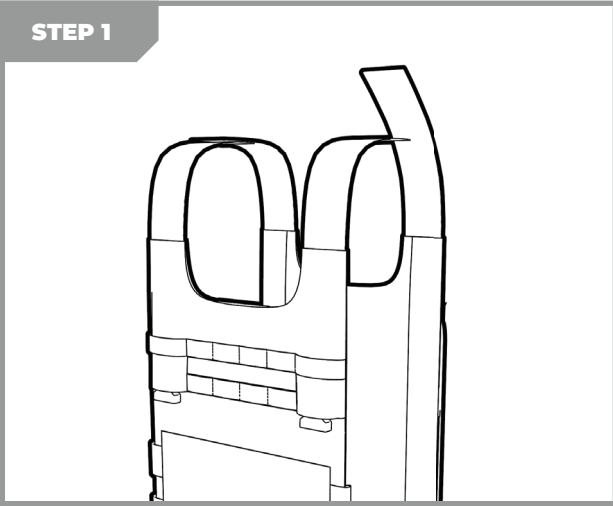
CAGE CODE **81JG6** DUNS **08-185-0461**

112 BUD PLACE, ABERDEEN, NC 28315
GENERAL INQUIRIES: INFO@SPIRITUSYSTEMS.COM

SEC 01 LOW PROFILE SHOULDER COVERS

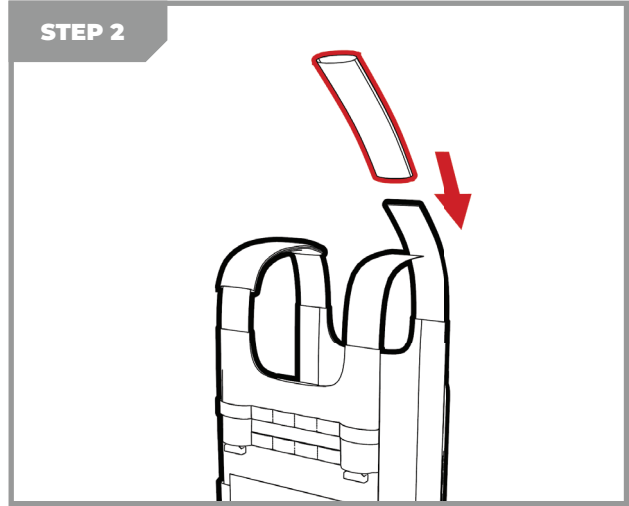
The Low Profile Shoulder Cover was designed to slide over your shoulder straps to prevent them from catching on clothing while still providing a low profile.

STEP 1



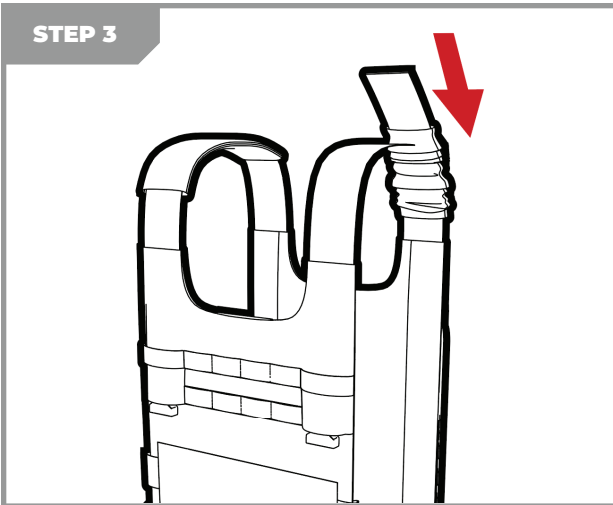
First mate the front plate bag and the rear plate bag together at the desired shoulder strap lengths. The more overlap there is on the shoulder straps, the higher the plate bag will rest on the torso.

STEP 2



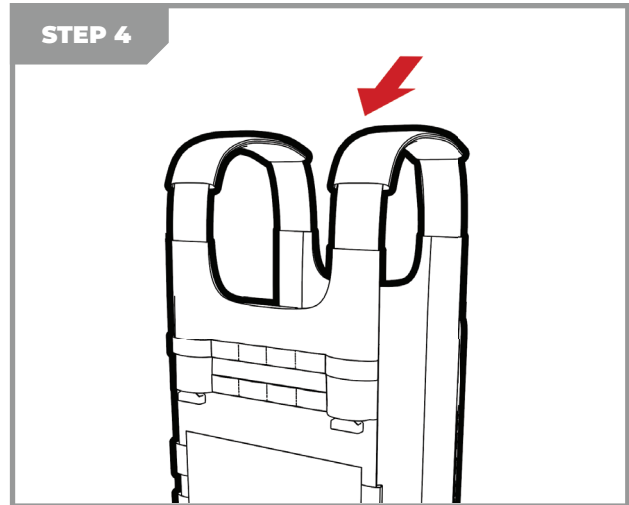
Once you have your desired length open one shoulder strap at a time and slide the shoulder cover on.

STEP 3



Compress the shoulder strap so it clears the velcro on the shoulder straps. Reconnect the straps.

STEP 4



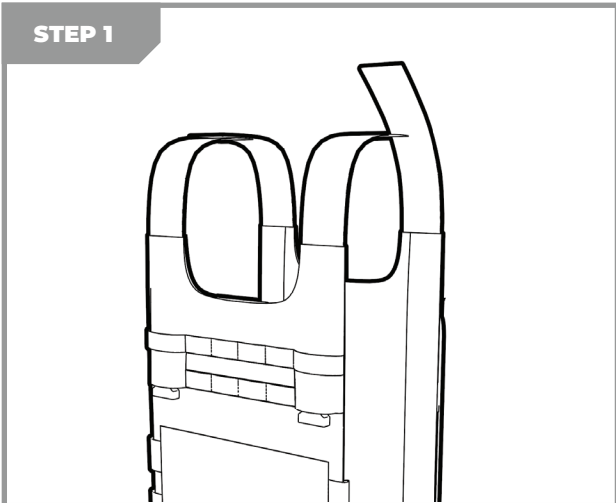
Once the straps are reconnected, pull the shoulder covers back over until they are fully extended



SEC 02 TRI-FOLD SHOULDER COVERS

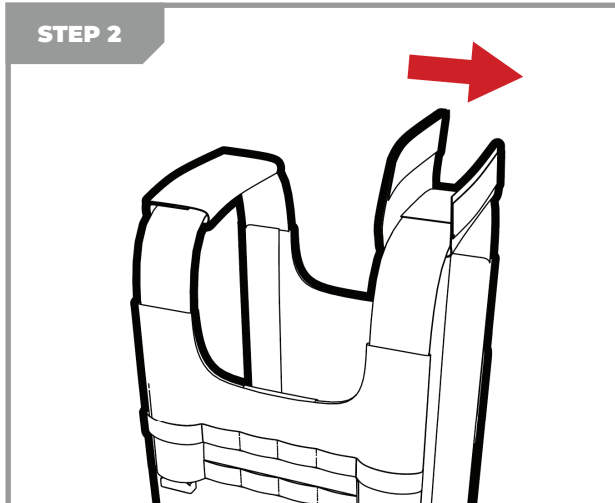
The TRI Fold shoulder cover is a simple solution for covering up your LV/119 shoulder straps. Although these are not built with padding in mind, they do offer some comfort for extended wear. The Tri-Fold design also makes routing communication wires easy and simple.

STEP 1



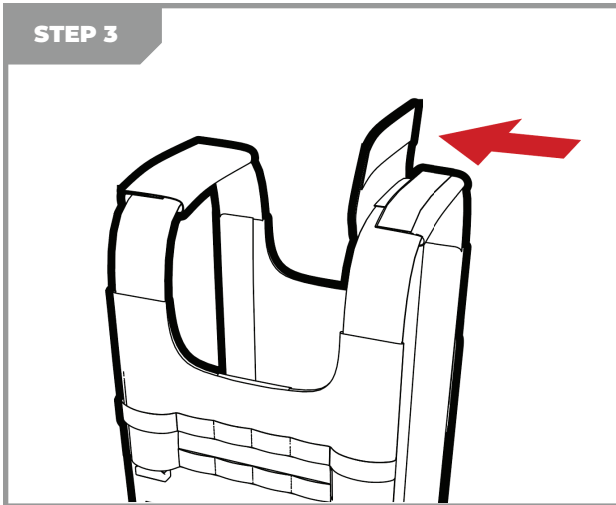
First mate the front plate bag and the rear plate bag together at the desired shoulder strap lengths. The more overlap there is on the shoulder straps, the higher the plate bag will rest on the torso.

STEP 2



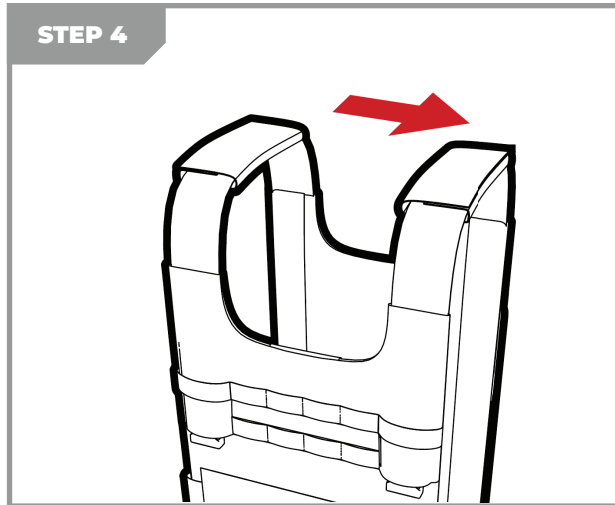
Place the open shoulder covers underneath the shoulder straps.

STEP 3



NOTE: These shoulder covers must be oriented with the upper flaps folding **AWAY** from the neck. If the upper flaps face inward, chafing on the neck can occur after extended use.

STEP 4

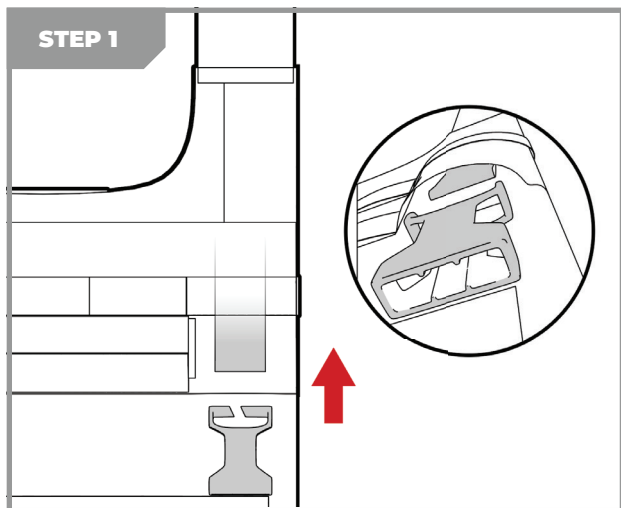


Once the shoulder covers are oriented properly you can open and re-close them to route cables or water bladder hoses.

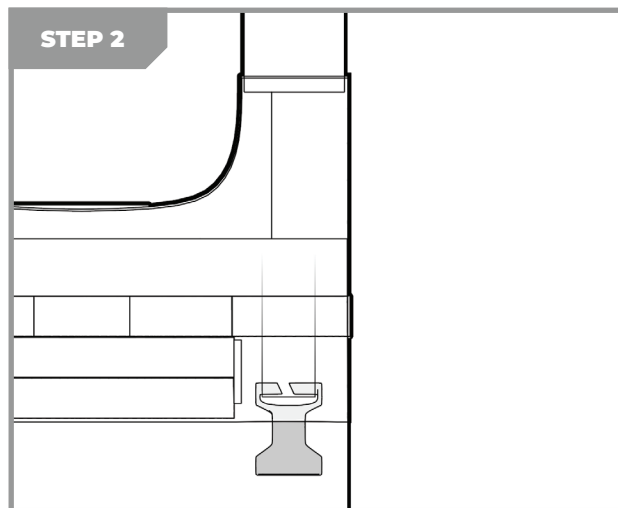


SEC 03 BUCKLES & TUBES

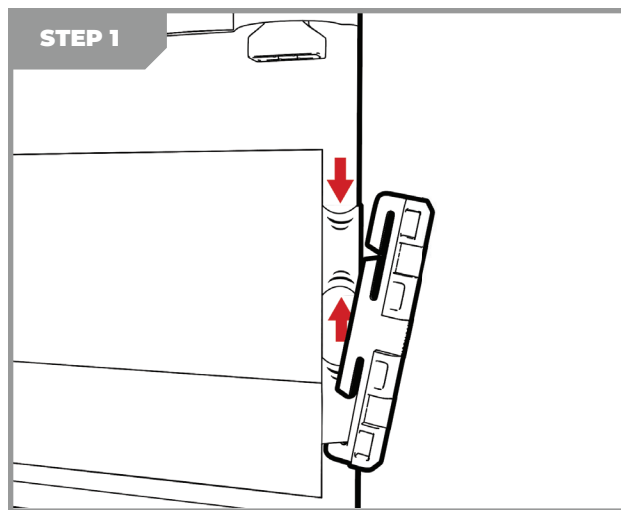
The LV/119 O V E R T front plate bag is equipped with concealed webbing that can accept Fastex buckles. These front plate bags also feature side webbing loops that are designed to anchor Tubes clips.



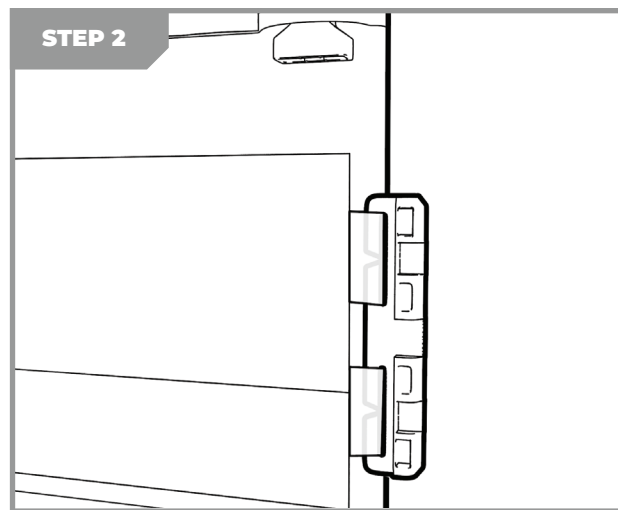
To install the fastex buckles, locate the concealed webbing loops to the left and right of the chest Velcro panel. The loops can be pinched to clear the gap in the buckle bar.



Once seated these buckles can be used to anchor the Micro Fight Chassis MK4 or the 5.56 Placard.



There are two rows of webbing on either side of the large Velcro field on the front of the LV/119 O V E R T plate bag. Locate these and pinch the webbing to seat the TUBES clip bar.



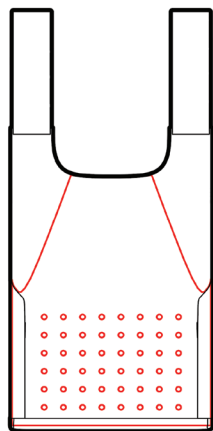
Once fully seated, your place carrier is now compatible with the Spiritus MOLLE Tubes cummerbund set.



SEC 04 CUMMERBUNDS (ELASTIC)

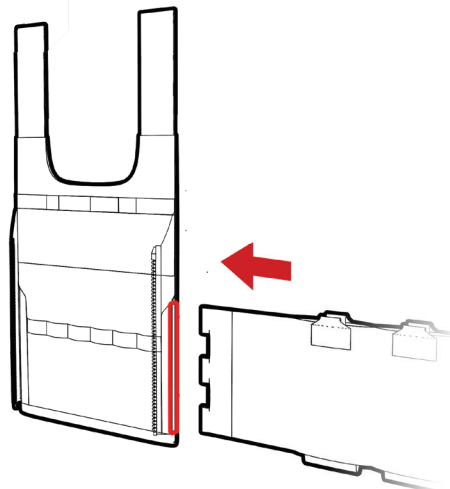
The 5-Inch Elastic Cummerbund is a simple and effective solution for professionals who need to carry and have rapid access to additional ammunition and equipment on their sides while still maintaining a low profile.

STEP 1



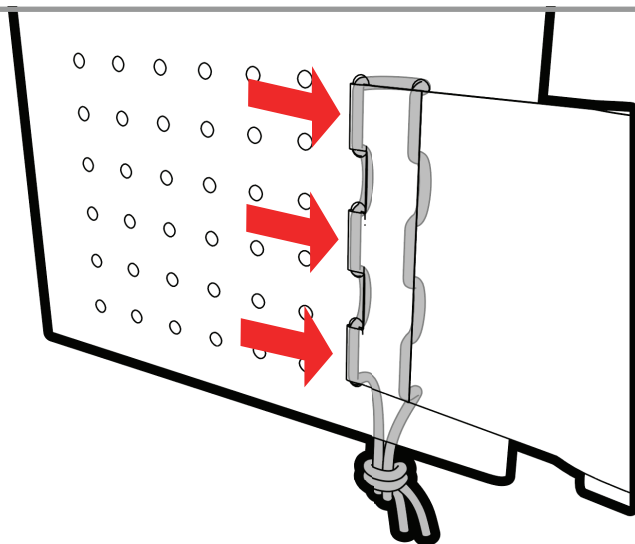
Inside each rear plate bag there is a semi-rigid grid panel. The grid panel will not be visible from the outside of the plate bag and is highlighted in red for visibility in this drawing.

STEP 2



Begin by locating the right and left cummerbund, and matching them with the right and left side of the plate bag.

STEP 3



Once the cummerbund is inserted, weave the included shock cord as shown. Note, only the innermost shock cord weave will interact with the cummerbund loops. After you have looped the shock cord through, tie off the shock cord and secure the excess by closing the plate bag flap.

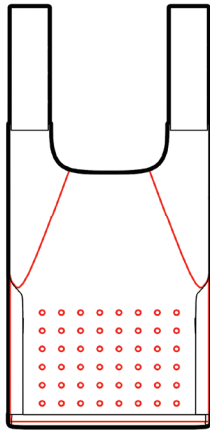
CONTINUED ON NEXT PAGE ►



SEC 04 CUMMERBUNDS (MOLLE)

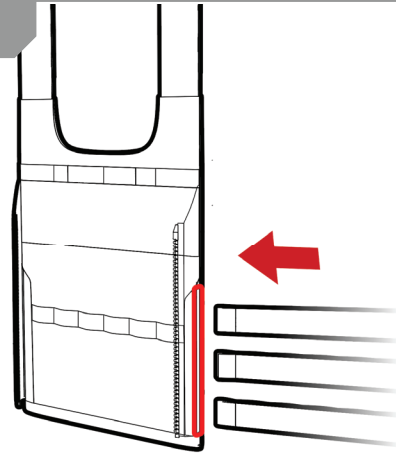
The MOLLE Cummerbund line was designed to be a lightweight and simple load carriage solution for the LV/119 series of vests. Using the widely adopted MOLLE system, these cummerbunds offers almost infinite configurations for mission needs by utilizing any MOLLE accessory that can be found on the market.

STEP 1



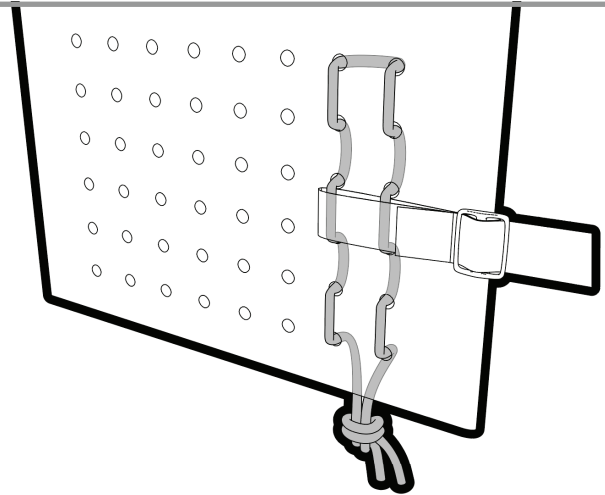
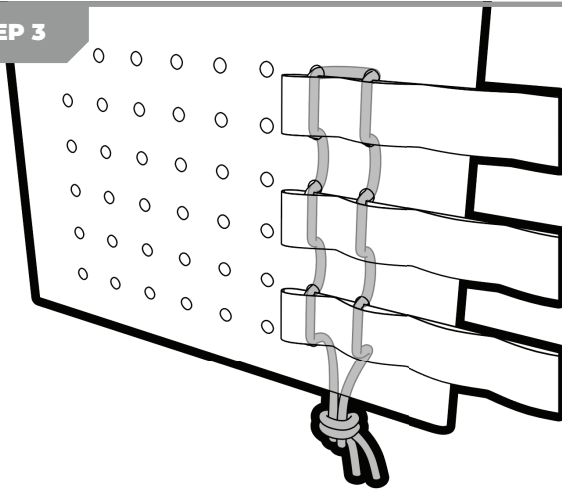
Inside each rear plate bag there is a semi-rigid grid panel. The grid panel will not be visible from the outside of the plate bag and is highlighted in red for visibility in this drawing.

STEP 2



Begin by locating the right and left cummerbund, and matching them with the right and left side of the plate bag.

STEP 3



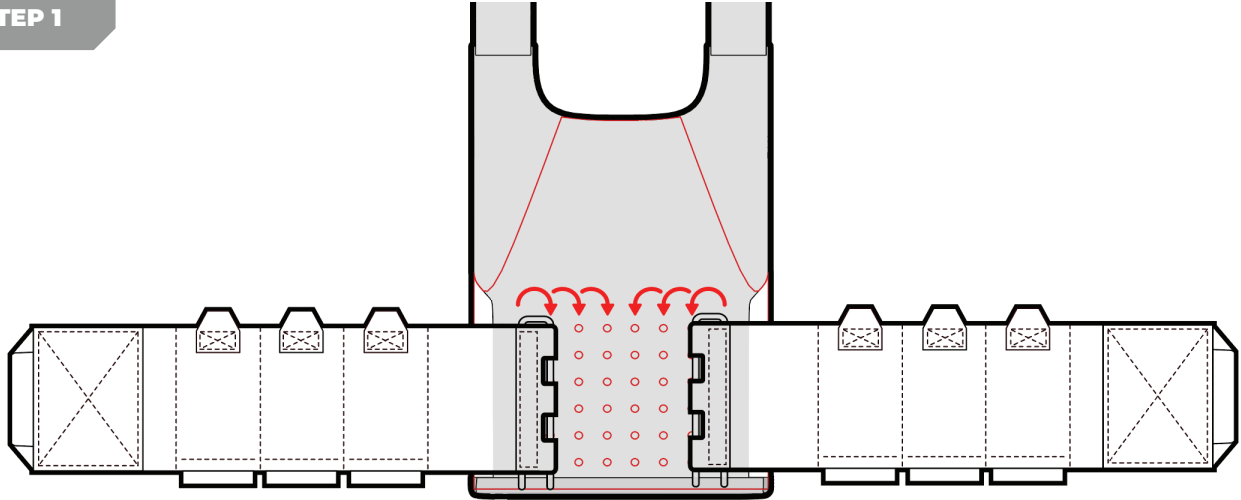
Once the cummerbund is inserted, weave the included shock cord as shown. The left figure displays the proper shock cord routing for the standard MOLLE cummerbunds, and the right figure displays routing for the single strap cummerbund. After you have looped the shock cord through, tie off the shock cord and secure the excess by closing the plate bag flap.



SEC 05 CUMMERBUND SIZING

The LV/119 grid system gives you a wide range of size options when you set up your cummerbunds.

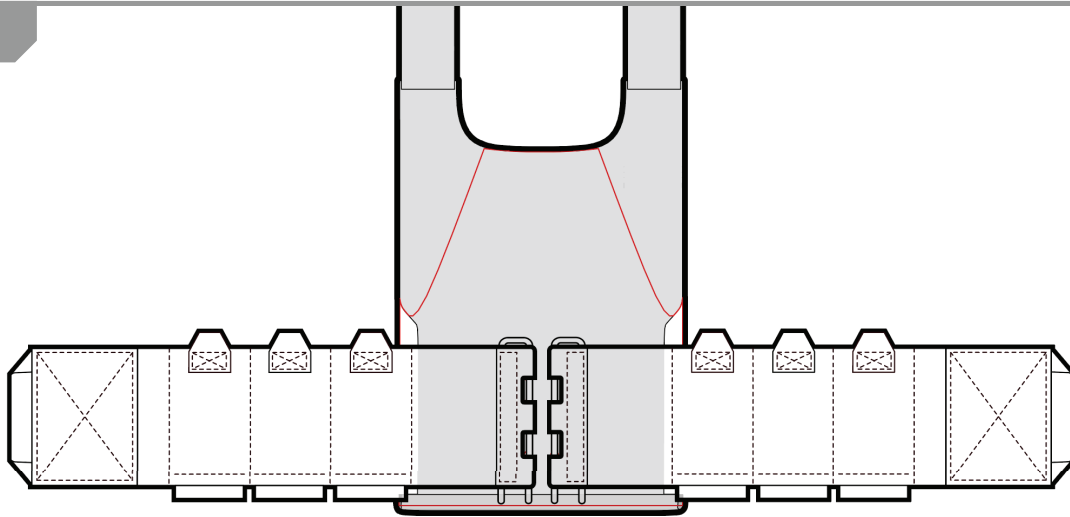
STEP 1



For the largest possible size your cummerbund will reach, align the cummerbund so the inner edge is flush with the **SECOND** row in from the edge.

To secure the cummerbund follow the installation steps on page 5. You can make the fit smaller by moving the cummerbunds closer together.

STEP 2



If you size your cummerbunds so that they meet in the middle and the plate carrier still fits too loosely, you can use the overlap method as outlined on the next page.

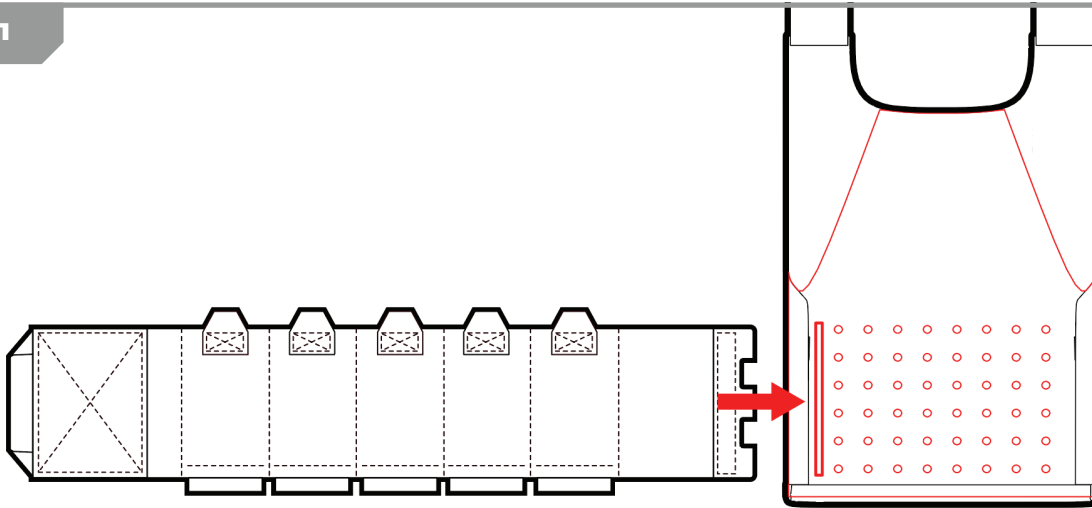
CONTINUED ON NEXT PAGE ►



SEC 05 CUMMERBUND SIZING (OVERLAP)

Spiritus Systems plate bags are designed to allow for extended size range adjustment by overlapping the cummerbunds.

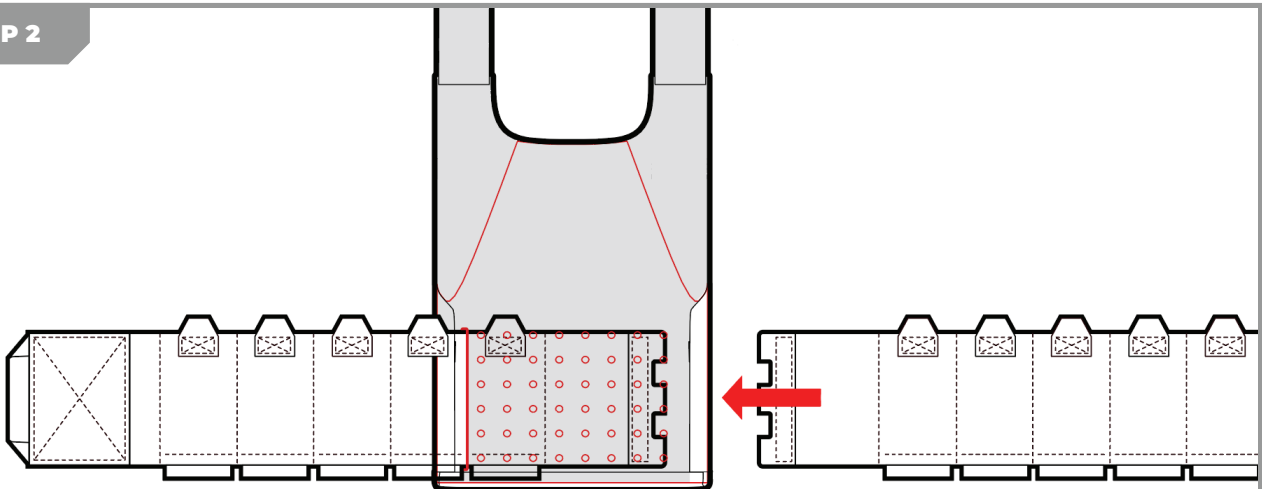
STEP 1



To begin locate the large slit on the side of the semi-rigid grid panel in your plate bag.

Insert the cummerbund through the slit so that you can secure the shock cord using the weave process on the **BACK SIDE** of the grid panel. (Note: see pages 5 & 6 for weaving instructions)

STEP 2



When one cummerbund is properly secured to the back side of the grid panel, the other cummerbund now can be mounted on any column on the front side of the grid panel, creating a much smaller plate bag circumference, and tighter fit.

CONTINUED ON NEXT PAGE ►

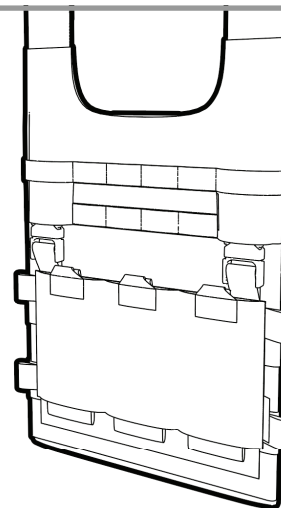
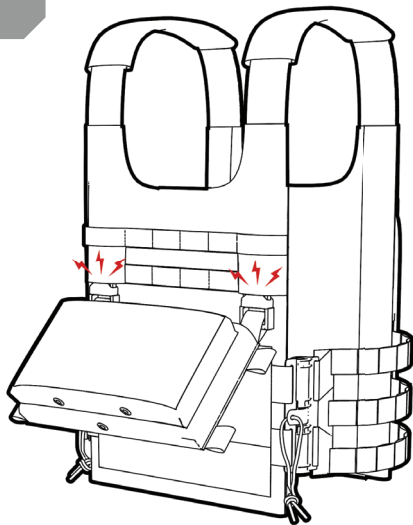


Reall all general safety warnings on page one of this operator's manual. The warnings in this manual are intended to call attention to fundamental performance limitations and areas of the product where proper usage must be followed.

SEC 06 MICRO FIGHT, PLACARD & POUCHES

The LV/119 plate carrier system is designed to accept the Micro Fight Chassis and 5.56 Placards. Once you have properly installed the LV/119 Fastex buckles (see page 4), you can quickly swap out load carriage solutions on the front plate bag.

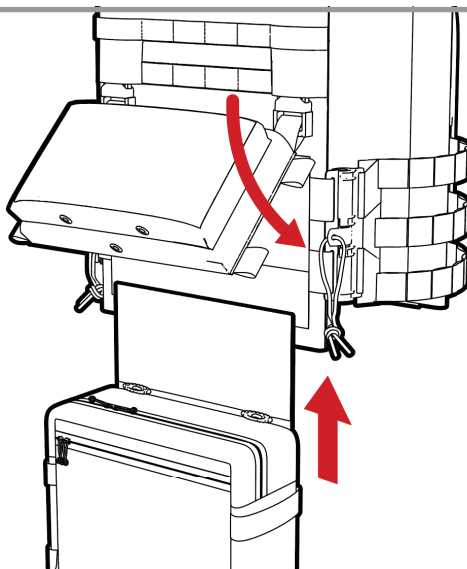
STEP 1



The Micro Fight and 5.56 Placard feature two male buckles at the top that mate to the two female buckles on the LV/119 plate bag.

Once clipped in the placard or chassis can be seated on the LV/119's Velcro field to fully secure the system.

STEP 2



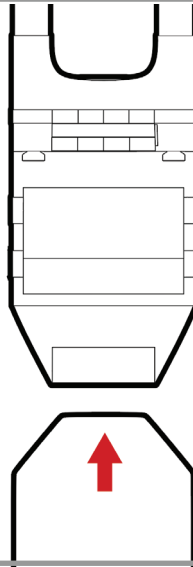
To equip hangar pouches like the SACK or Lunchbox, you can simply lift up your chassis or placard, and place flap against the front plate bag's Velcro field and re-seat chassis.



SEC 07 INSTALLING PLATES

Installing plates in the LV/119 is extremely quick and easy. Both the front and rear plate bags feature the same installations process.

STEP 1



To install the plates, pull the bottom flap out and slide the plate in, taking care to face the contour of the plate towards the inside of the plate bag, facing your torso.

STEP 2

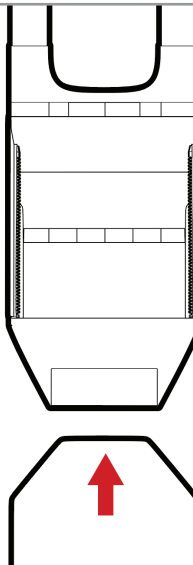


Plate sizing is extremely important, below are the recommended plate sizes for our Medium, Large and XL Plate Bags.

Medium - 10" x 12.5" Plate

Large - 10.25" x 13.25" Plate

Extra Large - 11" x 14.00" Plate

Thickness - MAXIMUM of 1.20"

